

## 7. Level 2 Repair

### 7-1. Disassembly

1

- 1) Detach Top Deco.
- 2) Unscrew 3 Points.

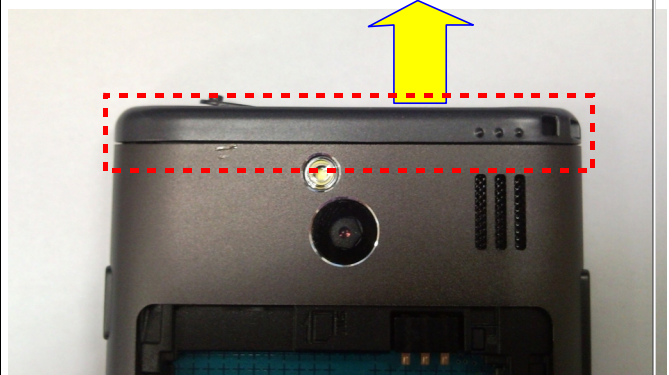


#### Caution

- 1) Be careful USB Port Cover not to be lost

2

- 1) Disassemble the Top Cover.

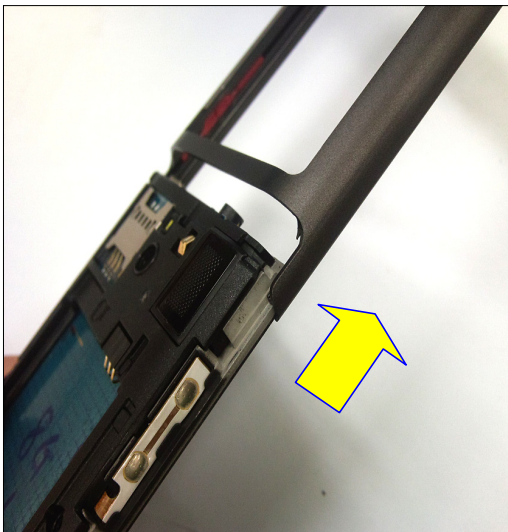


#### Caution

- 1) Be careful USB Port Cover not to be lost

3

- 1) Disassemble the Body Case.

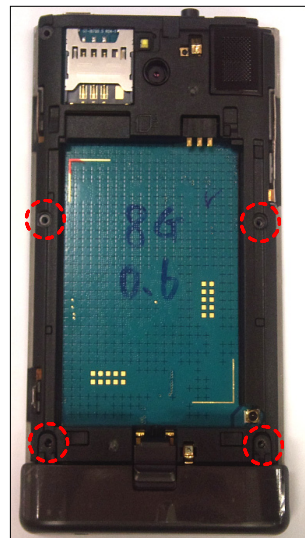


#### Caution

- 1) Slide up the Body Case following guide line on the Bracket

4

- 1) Unscrew 4 points.

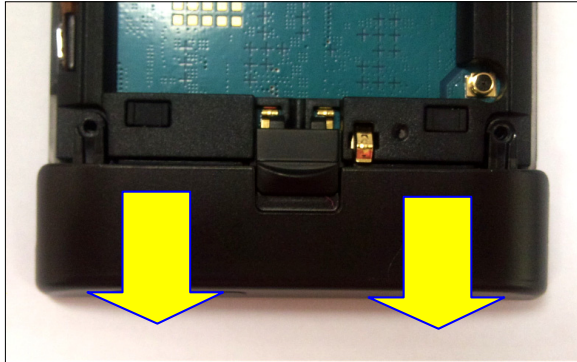


#### Caution

- 1) Be careful RF connector not to be damaged when screwing.

5

1) Disassemble the Bottom Cover

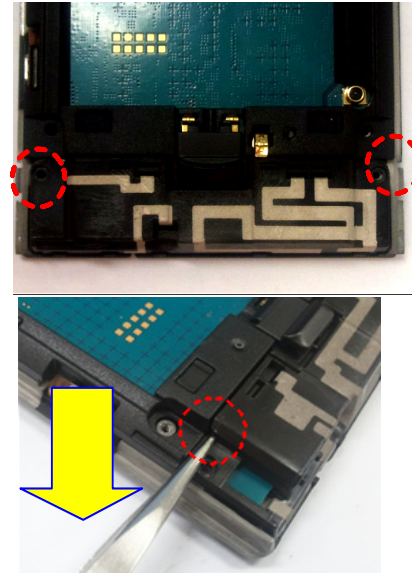


**Caution**

1) Be careful Antenna module not to be damaged.

6

1) Unscrew 2 points.  
2) Disassemble the Antenna module.

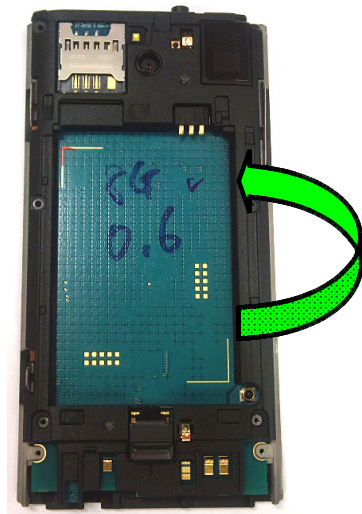


**Caution**

1) Be careful Antenna module not to be damaged.

7

1) Disassemble the Rear

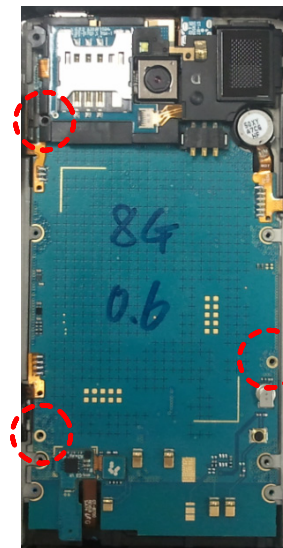


**Caution**

1) Be careful Antenna module not to be damaged.

8

1) Unscrew 4 points.

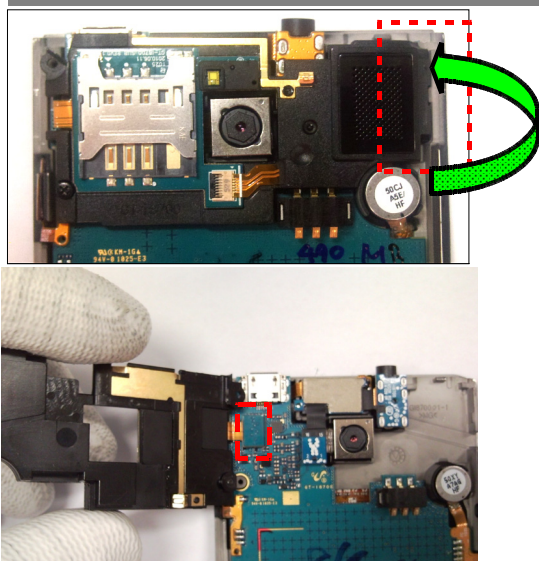


**Caution**

1) Be careful FPCB not to be Damaged

9

- 1) Disassemble SPK module from PBA
- 2) Disconnect SPK module FPCB from PBA.

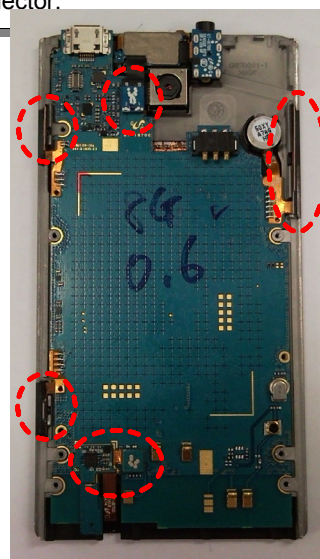


— **Caution**

- 1) Be careful FPCB not to be damaged.

10

- 1) Detach the Volume, CAM Key FPCB
- 2) Detach Receiver, SUB Key FPCB Connector.

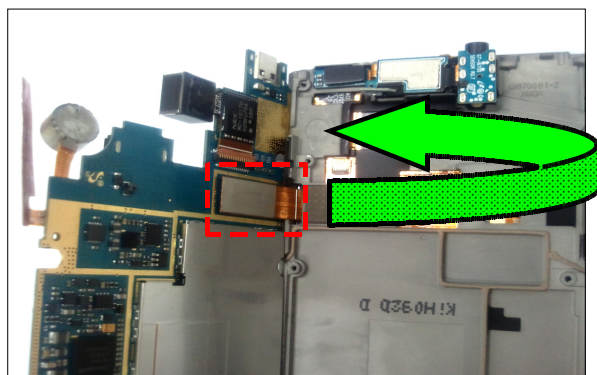


— **Caution**

- 1) Be careful FPCB not to be damaged.

11

- 1) Disconnect OCTA FPCB connector.
- 2) Separate PBA with FRONT Ass'y.

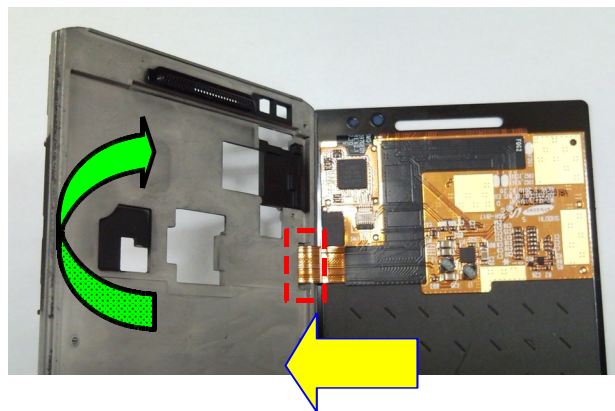


— **Caution**

- 1) Be careful OCTA & FPCB not to be damaged.

12

- 1) Disassemble the OCTA with Bracket



— **Caution**

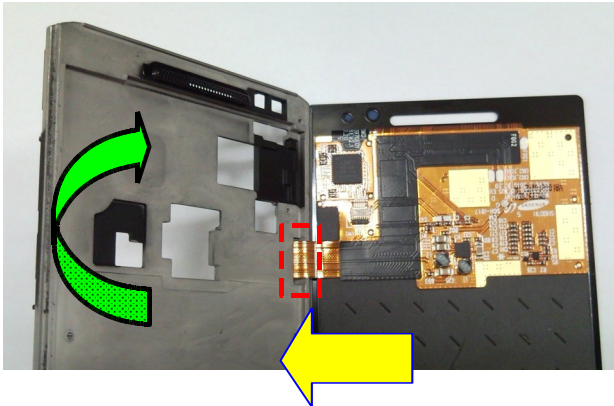
- 1) Be careful OCTA & FPCB not to be damaged.



## 7-2. Assembly

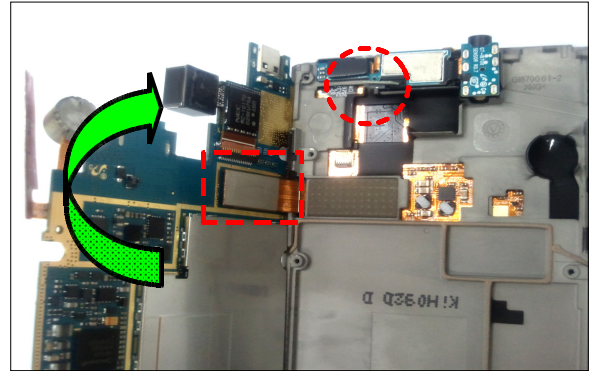
1

- 1) Insert OCTA FPCB to the hole in the Bracket.
- 2) Assemble the OCTA with the Bracket.



2

- 1) Connect OCTA FPCB to PBA.
- 2) Assemble PBA and FRONT Ass'y.



### Caution

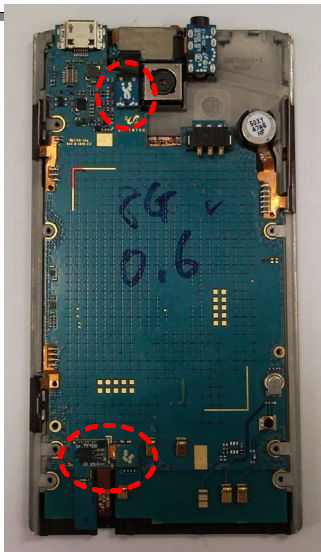
- 1) Be careful OCTA & FPCB not to be damaged.

### Caution

- 1) Be careful Receiver FPCB not to be got in between PBA and Bracket.

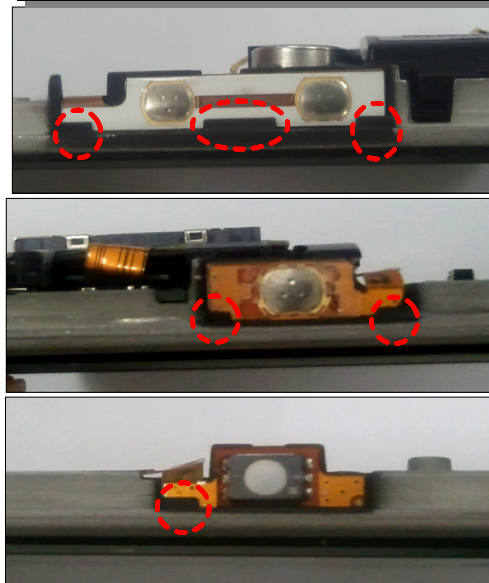
3

- 1) Connect Receiver, SUB Key FPCB Connector.



4

- 1) Attach the Volume, CAM Key FPCB on the Bracket.

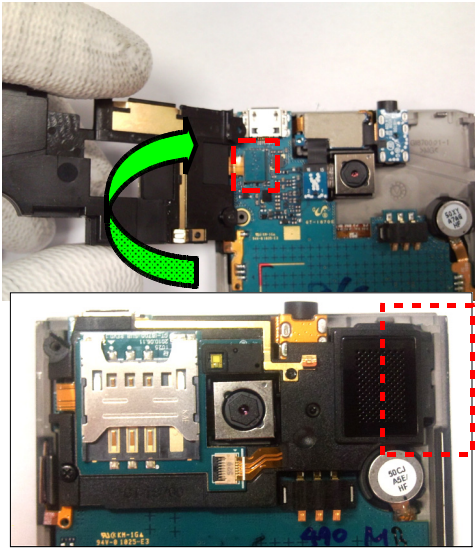


### Caution

- 1) Check FPCB holding by guide on the Bracket.

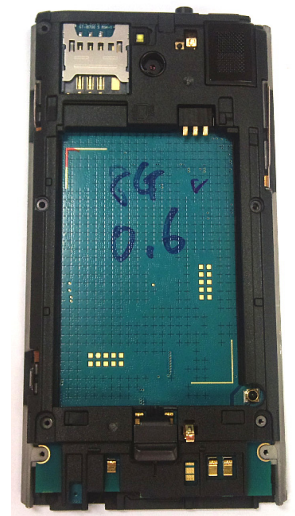
5

- 1) Connect SPK module FPCB to PBA.
- 2) Assemble PBA and SPK module.



6

- 1) Assemble the Rear.

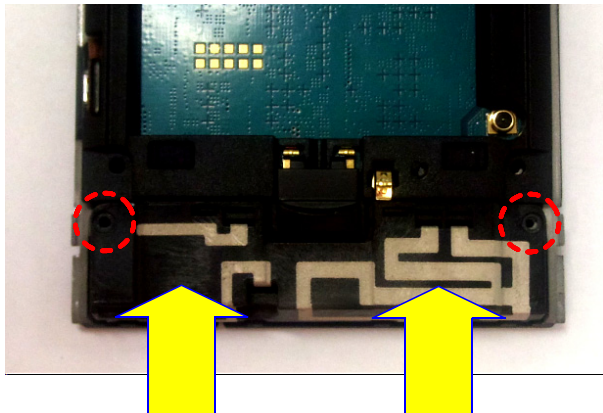


### Caution

- 1) Check SPK module holding by guide on the Bracket.

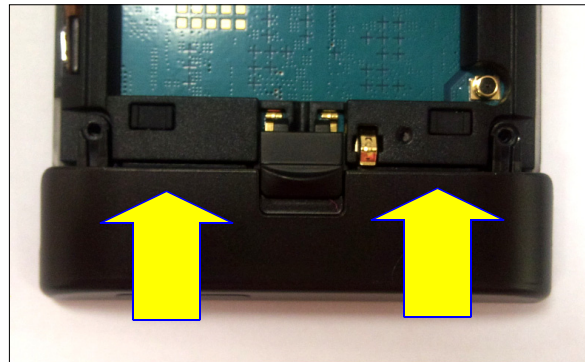
7

- 1) Assemble Antenna module
- 2) Screw 2 points.  
-  $1.2 \pm 0.1$  kgf / cm



8

- 1) Assemble the Bottom Cover.

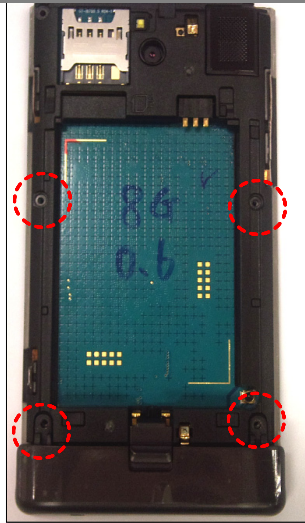


### Caution

- 1) Assemble & Screw Antenna module only.  
Do not Screw on the Rear yet.

5

- 1) Screw 4 points.  
- 1.2 ± 0.1 kgf / cm

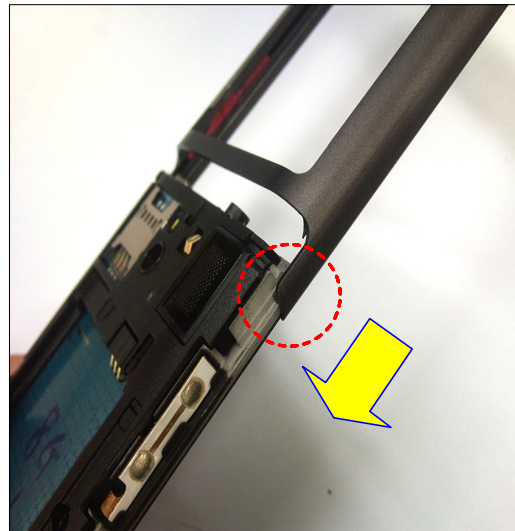


**Caution**

- 1) Be careful RF connector not to be damaged when screwing.

6

- 1) Assemble the Body Case.

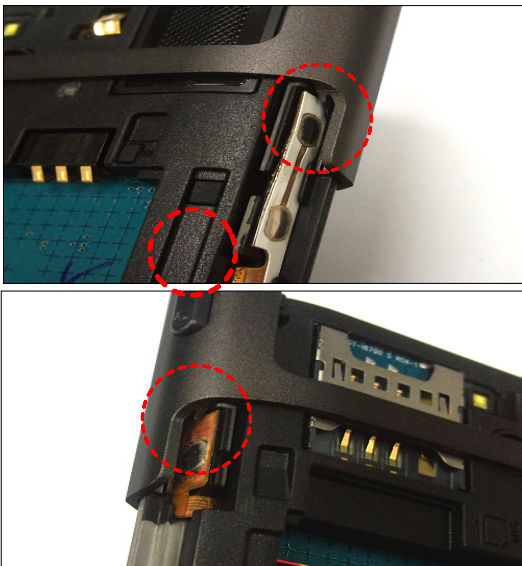


**Caution**

- 1) Slide down the Body Case following guide line on the Bracket

7

- 1) assemble the Case Body.

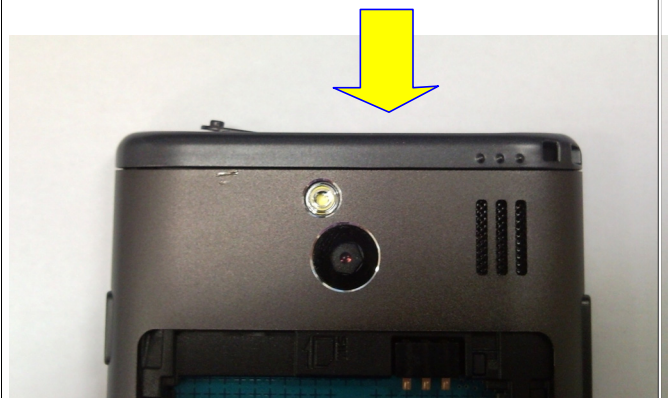


**Caution**

- 1) Be careful Key FPCB not to be damaged when assembling with Body Case.

8

- 1) Assemble the Top Cover.



**Caution**

- 1) Be careful USB Port Cover not to be lost



9

- 1) screw 3 points.  
-  $1.2 \pm 0.1$  kgf / cm
- 2) Attach Top Deco.

**Caution**

- 1) Be careful USB Port Cover not to be lost