



Bluetooth Software

V6.xx.xx

Document Revision: 20080716

ActiveSync 4.5 connection to a Windows
Mobile 6 PDA

Table of Contents

1 Test Environment

2 Configure the Connection

1 Test Environment

PC:

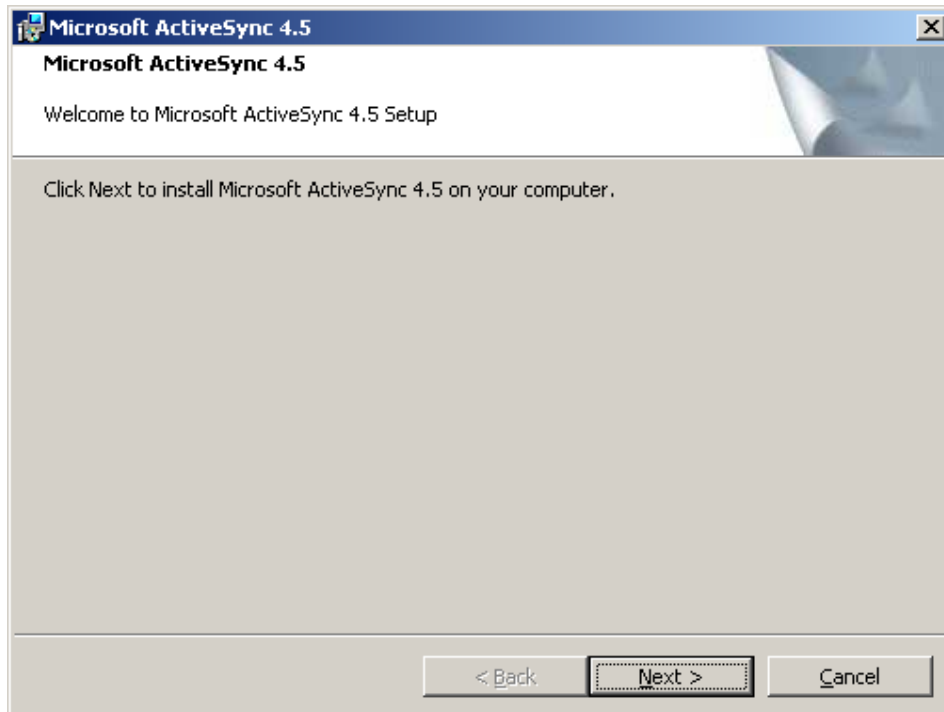
Notebook: Tecra M9
OS: Windows XP, Service Pack 3
Software: Active Sync 4.5, Bluetooth Stack 6.10.10

PDA:

PDA: HTC TyTN II
OS: Windows Mobile 6

2 Configure the Connection

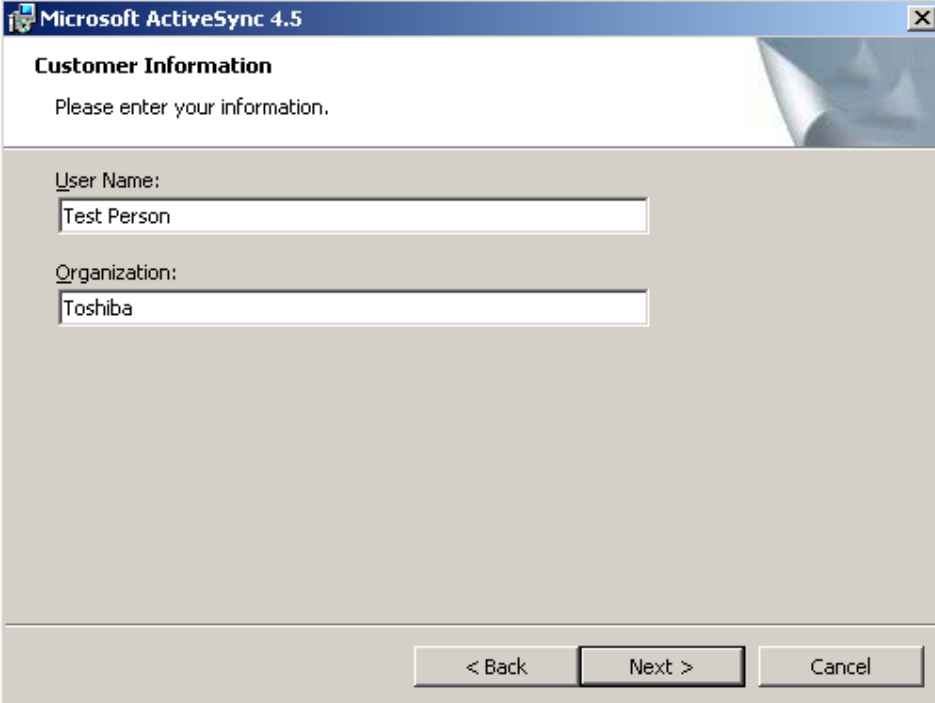
1. PC: Launch Active Sync setup.exe. Installation will start. Just click "Next" in the welcome window.



2. PC: To proceed please read and accept the license agreement and on "Next".



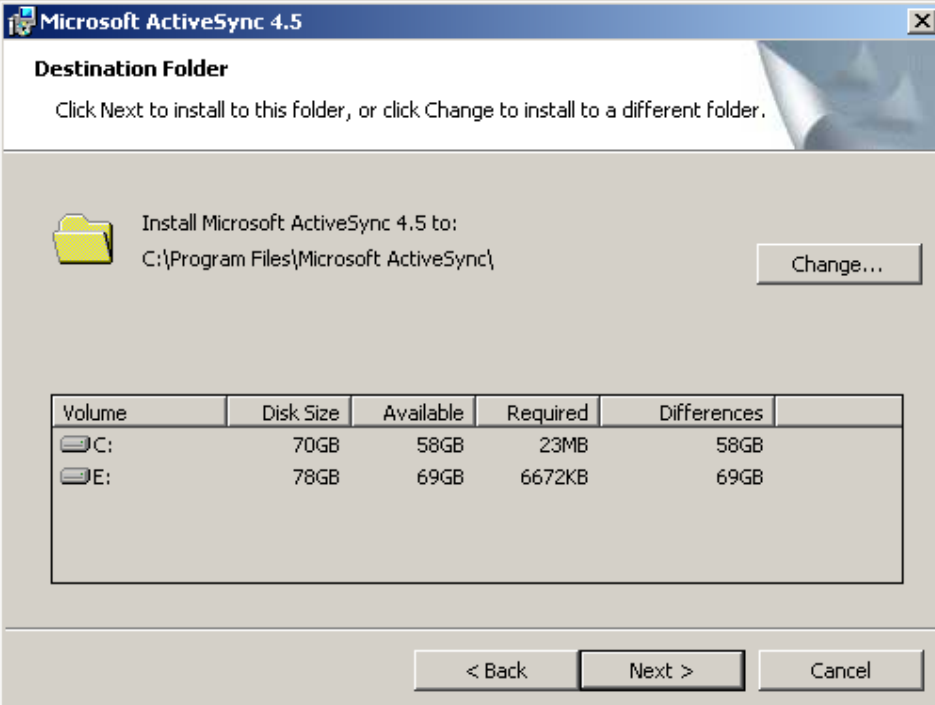
3. PC: Enter your "User Name" and your "Organization" and click "Next".



The screenshot shows the 'Customer Information' dialog box in Microsoft ActiveSync 4.5. The title bar reads 'Microsoft ActiveSync 4.5'. The main heading is 'Customer Information' with a sub-instruction 'Please enter your information.' Below this, there are two text input fields. The first is labeled 'User Name:' and contains the text 'Test Person'. The second is labeled 'Organization:' and contains the text 'Toshiba'. At the bottom of the dialog, there are three buttons: '< Back', 'Next >', and 'Cancel'.

Field	Value
User Name:	Test Person
Organization:	Toshiba

4. PC: In you want to choose a different destination folder click "Change" otherwise click "Next".

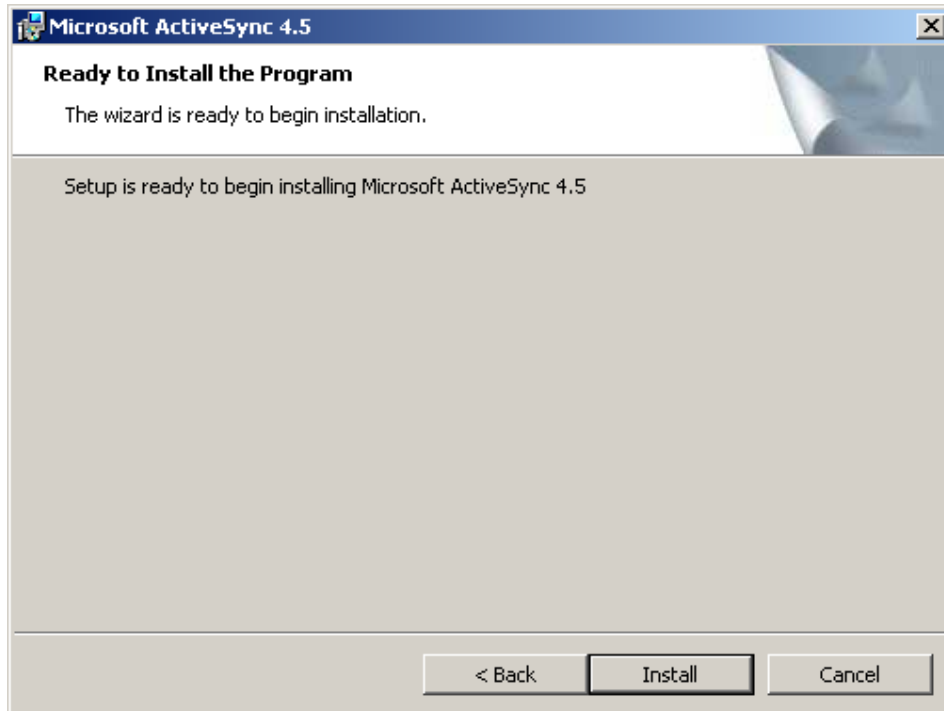


The screenshot shows the 'Destination Folder' dialog box in Microsoft ActiveSync 4.5. The title bar reads 'Microsoft ActiveSync 4.5'. The main heading is 'Destination Folder' with a sub-instruction 'Click Next to install to this folder, or click Change to install to a different folder.' Below this, there is a folder icon and the text 'Install Microsoft ActiveSync 4.5 to: C:\Program Files\Microsoft ActiveSync\'. To the right of this text is a 'Change...' button. Below this information is a table showing disk space details for two volumes, C: and E:.

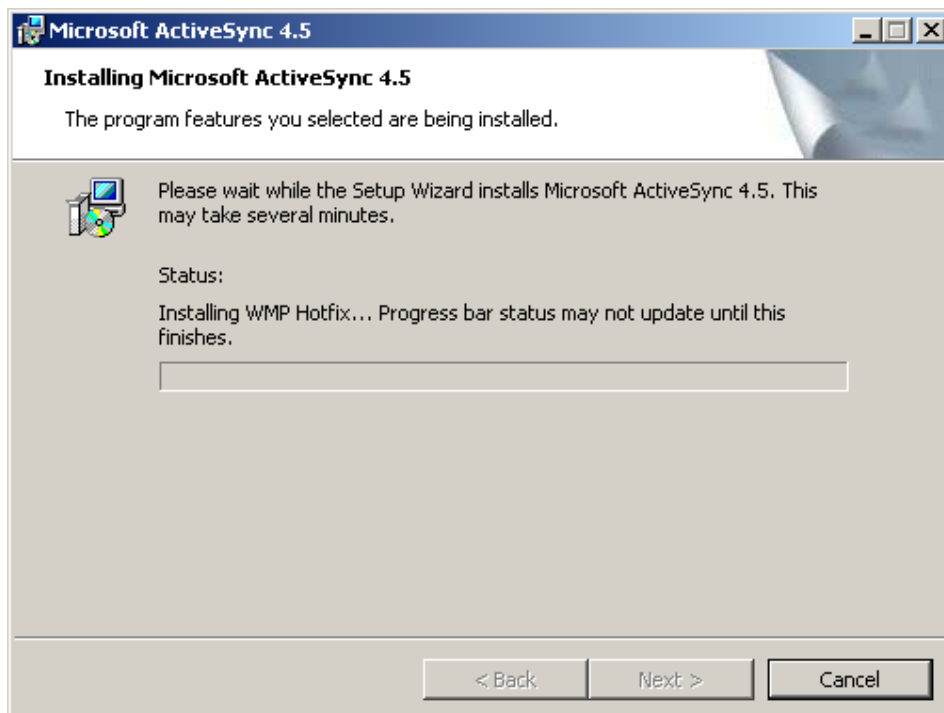
Volume	Disk Size	Available	Required	Differences
C:	70GB	58GB	23MB	58GB
E:	78GB	69GB	6672KB	69GB

At the bottom of the dialog, there are three buttons: '< Back', 'Next >', and 'Cancel'.

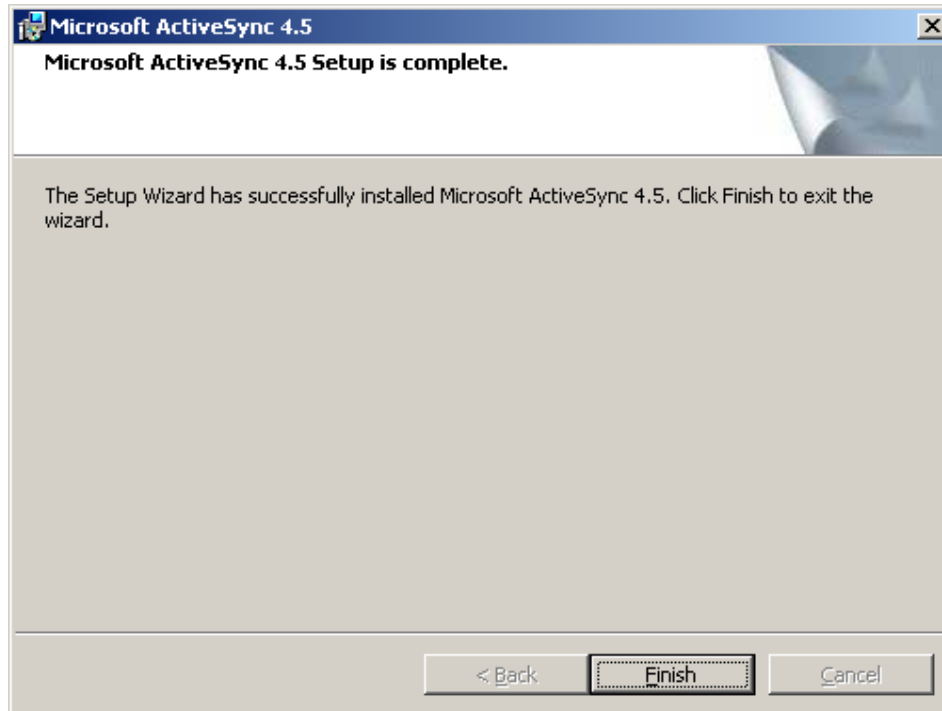
5. PC: Click "Install" to start the installation process



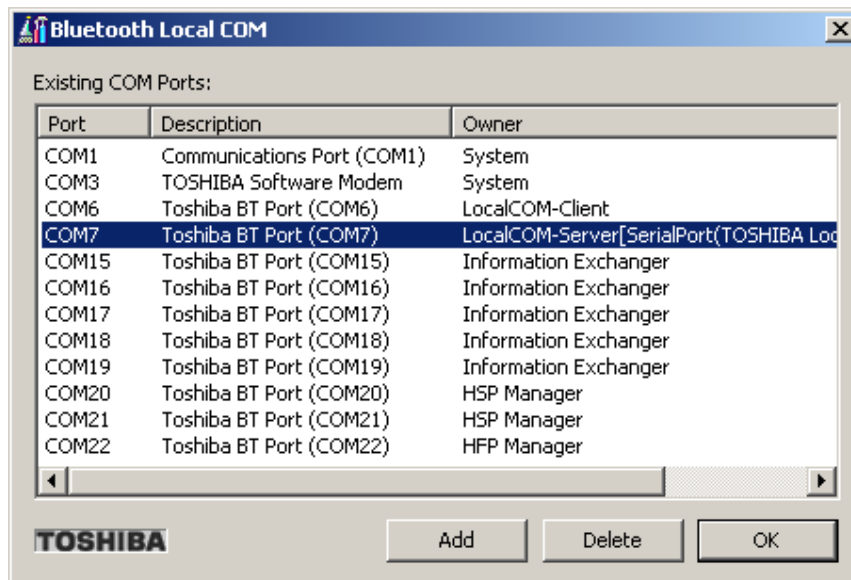
6. PC: It will take a few seconds until all files are copied




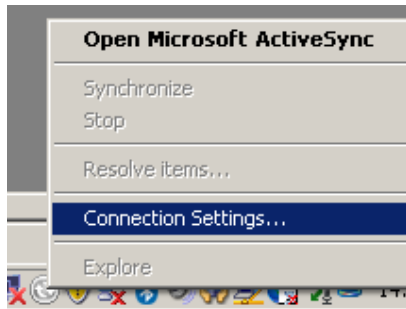
7. PC: To complete the installation click "Finish"



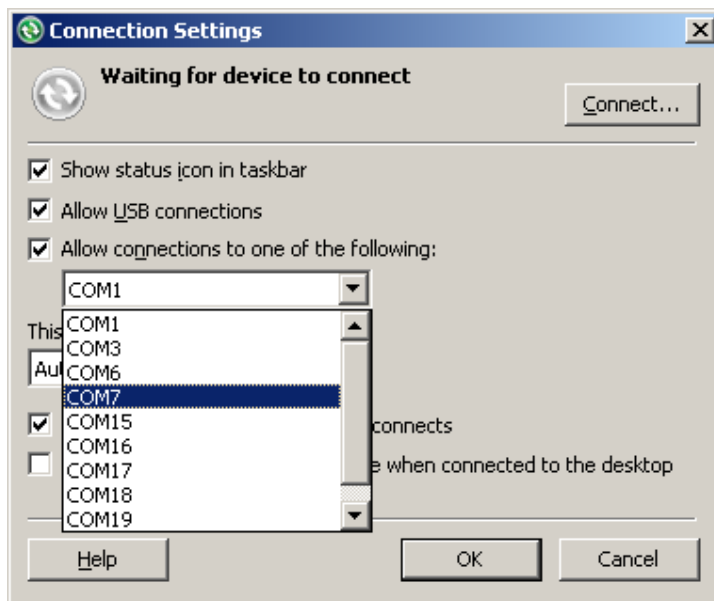
8. PC: Find out the Bluetooth LocalCOM-Server-port and write it down. It can be queried by using the "Bluetooth Local COM" Tool. [Start]-[Control Panel]-[Bluetooth Local COM]. In this case the Bluetooth LocalCOM-Server port is COM7.



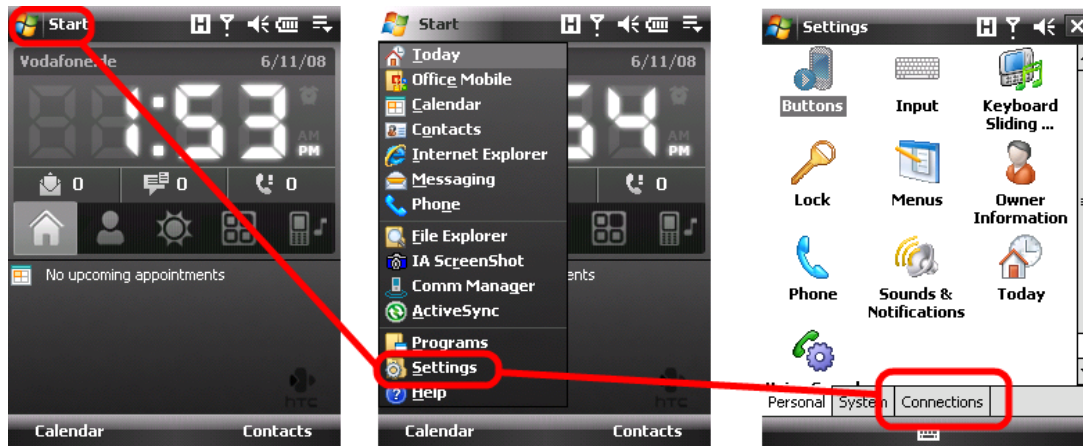
9. PC: The next step is to configure Active Sync accordingly. Right-click the ActiveSync icon  in the traybar and choose "Connection settings..."



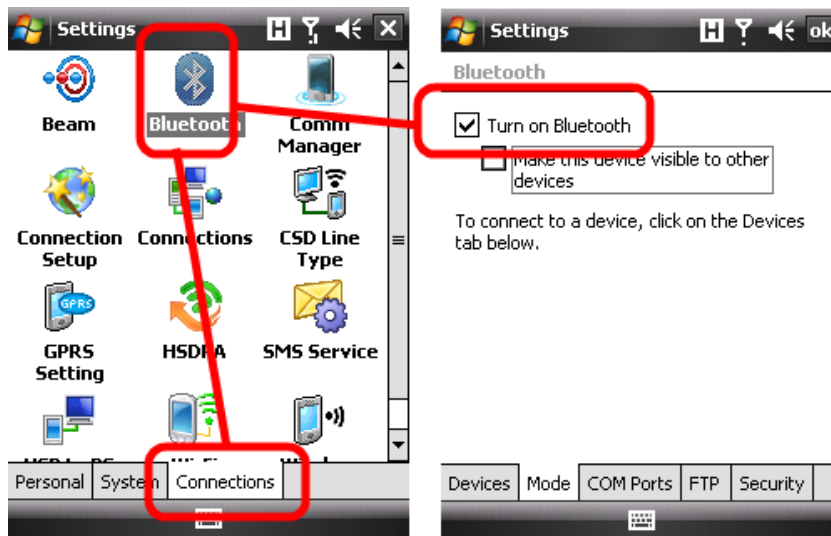
10 PC: The "Connection Settings" window will open. Select "Allow connections to one of the following:" and choose the appropriate COM port. Use the same COM port as the LocalCOM-Server (see Step 8) which is in our case "COM7". Confirm with "OK"



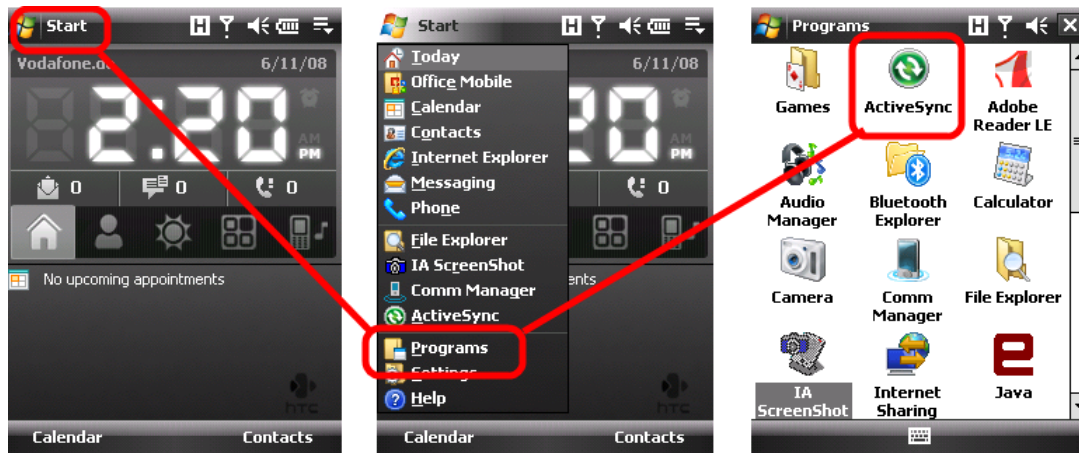
11. PDA: Bluetooth needs to be enabled on your Windows Mobile 6 device. Click [Start]-[Settings]-[Connections tab]



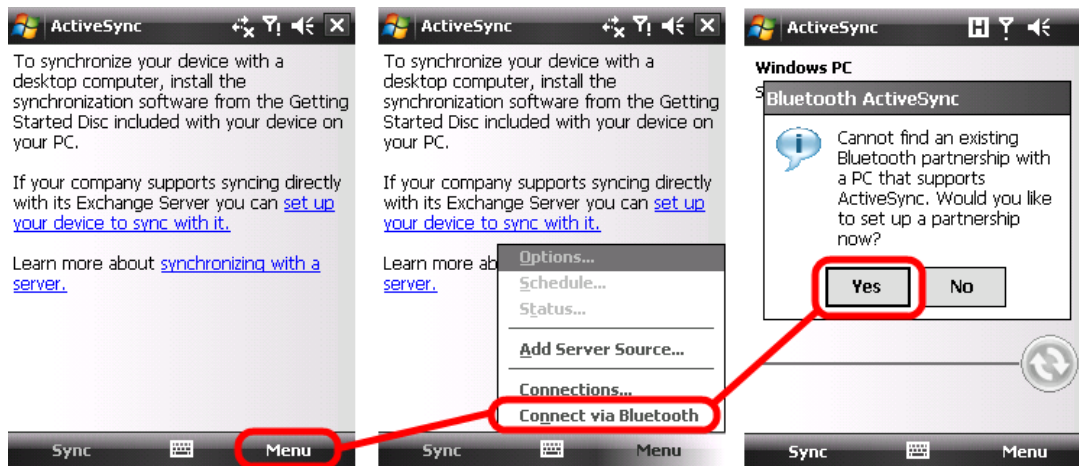
12. PDA: Choose the Bluetooth icon in the "Connections" tab and tick "Turn on Bluetooth"



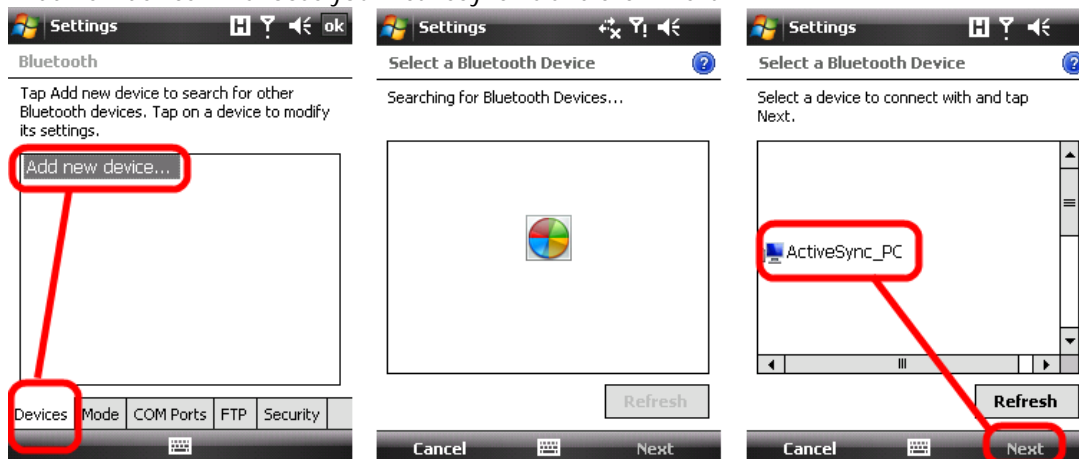
13. PDA: After Bluetooth is turned on you can start with setting up the ActiveSync Connection. Start "ActiveSync" by clicking [Start]-[Programs]-[ActiveSync]



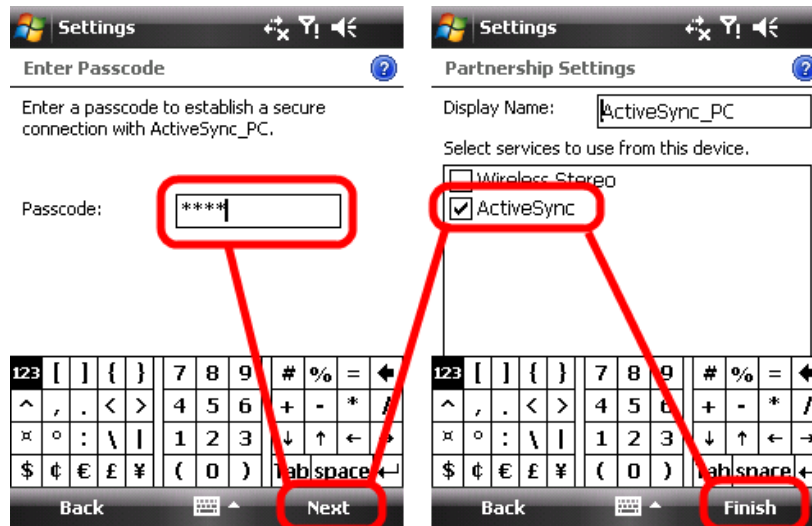
14. PDA: In "Menu" choose "Connect via Bluetooth" and confirm with "Yes"



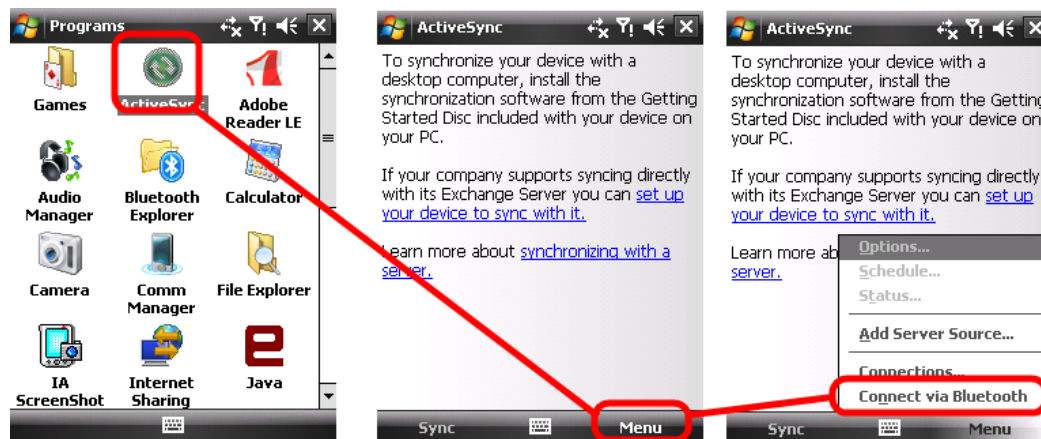
15. PDA: Choose the "Devices" tab in the Bluetooth Window. To perform a device discovery click "Add new device...". Choose your ActiveSync PC and click "Next"



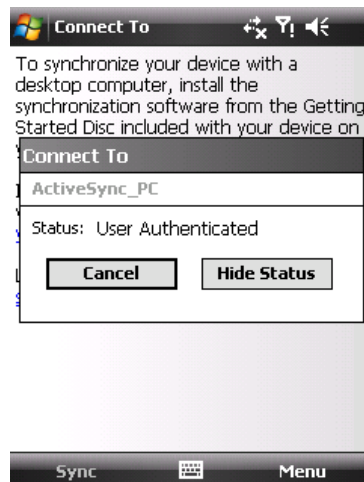
16. PDA: Next step is to enter the Passkey on your PDA and confirm it on your ActiveSync PC. Click "Next". The next screen shows the available services of the ActiveSync PC. Choose "ActiveSync" and click "Finish".



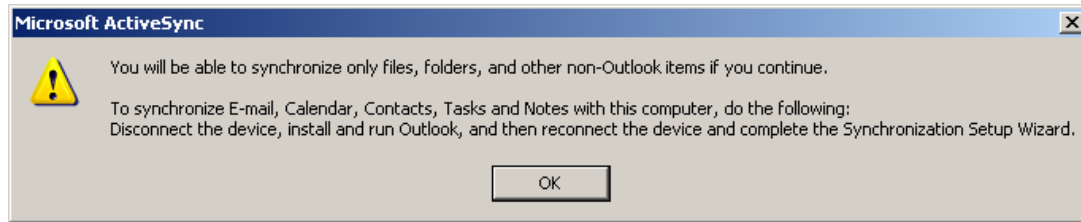
17. PDA: After that close all open windows and open ActiveSync [Start]-[Programs]-[ActiveSync]. Click "Menu" and then choose "Connect via Bluetooth"



18. PDA: A connection to the ActiveSync PC will be established



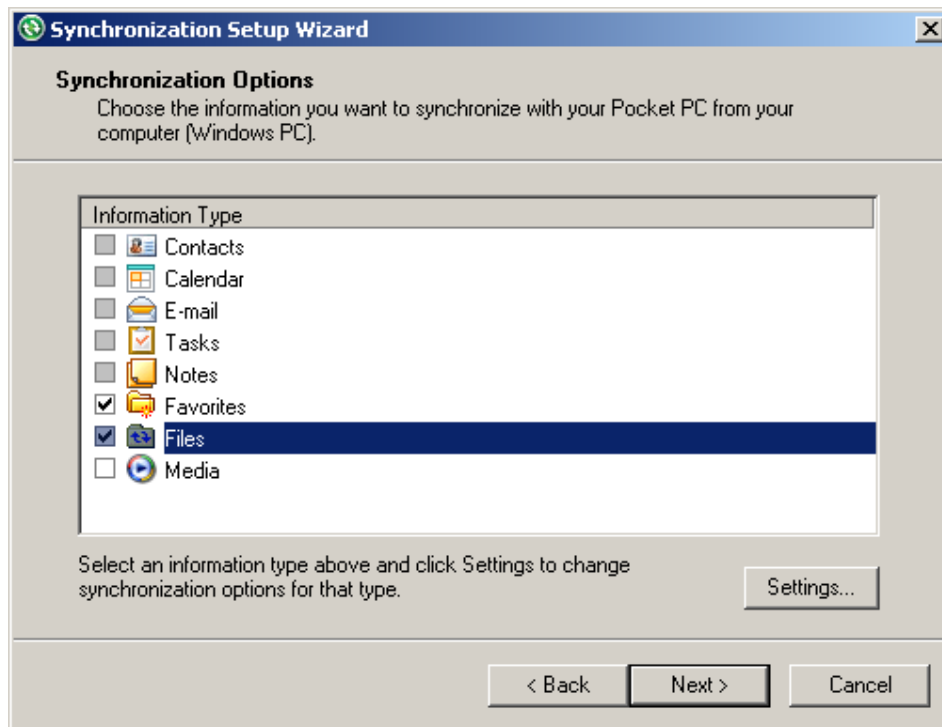
19. PC: Click "Ok" to continue



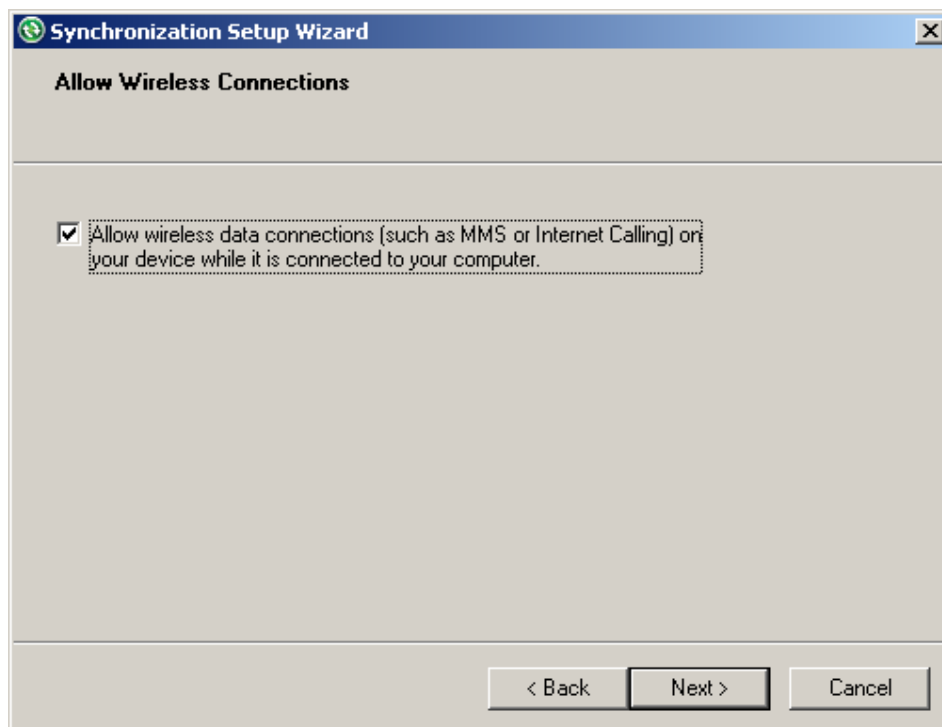
20. PC: In the "Synchronization Setup Wizard" window click "Next"



21. PC: Select the items you want to synchronize and click "Next"



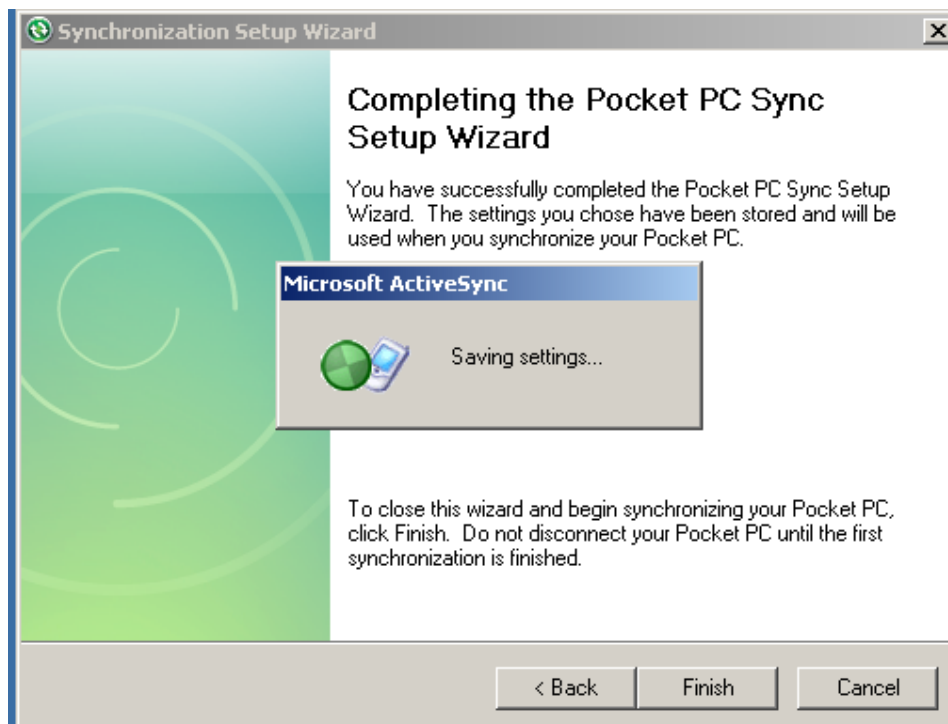
22. PC: Tick the option and click "Next"



23. PC: Click "Finish" to complete the installation



24. PC: Your settings will be applied



25. PC: The synchronization starts

